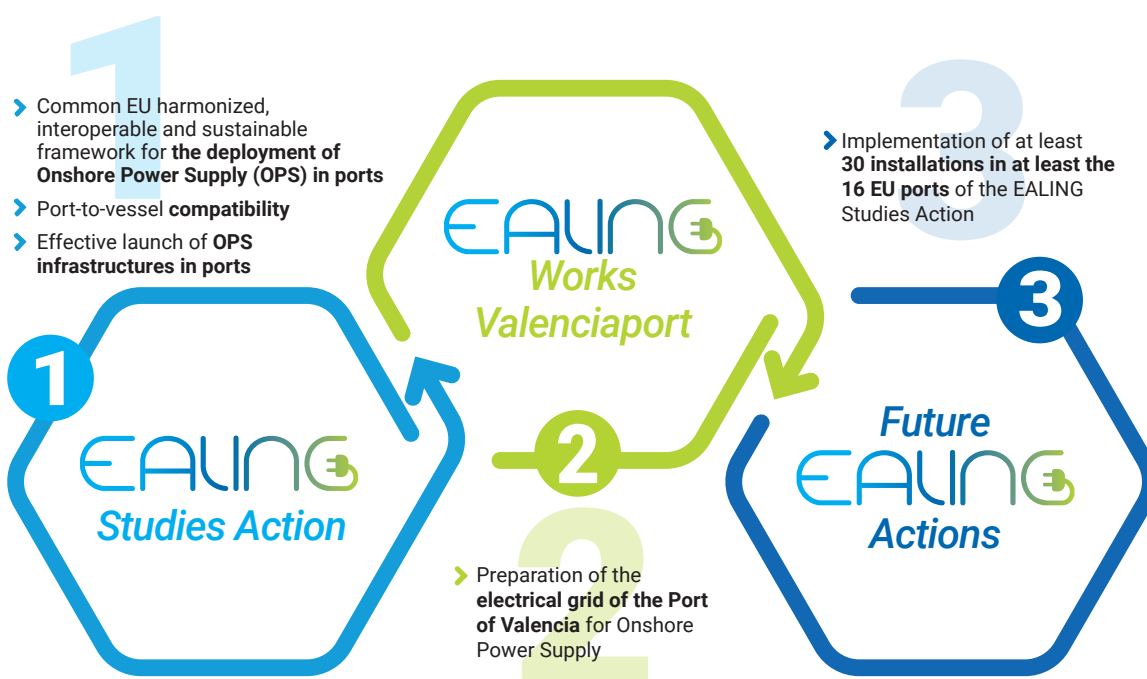


EALING

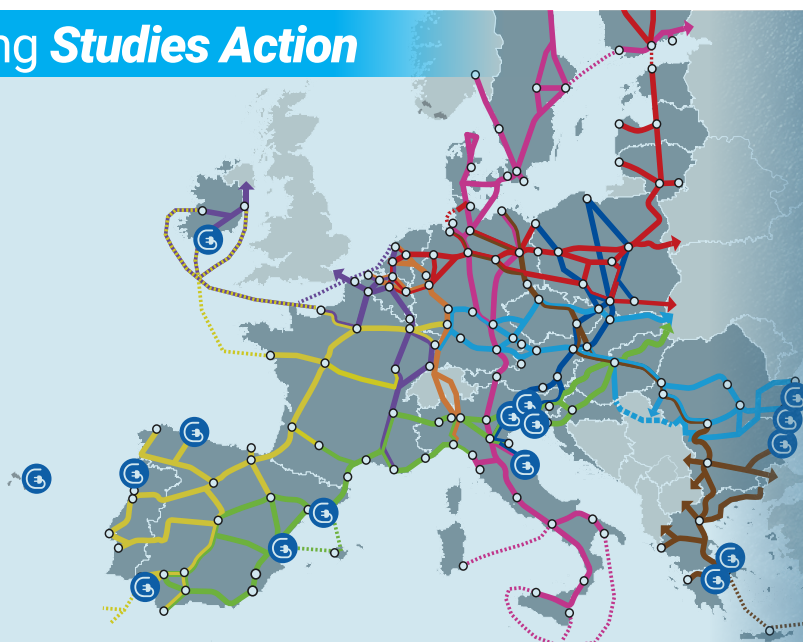
European flagship Action for coLd IronING in ports



1

Ealing Studies Action

- Baltic – Adriatic
- North Sea – Baltic
- Mediterranean
- Orient / East Mediterranean
- Scandinavian – Mediterranean
- Rhine – Alpine
- Atlantic
- North Sea – Mediterranean
- Rhine – Danube



16

European Ports

22

Partners

3

Sea Basins

Ealing *Studies Action* - ACTIVITIES

EALING Studies aim at providing a suitable answer to the **need of moving towards a more competitive and sustainable TEN-T Maritime Network**, answering to the key challenges concerning environment and sustainability.

The activities carried out in each of the consortium's ports are aimed at performing all the studies that are necessary to accelerate the implementation of OPS in their ports.

A1

Harmonised Framework for the electrification of the participating TEN-T maritime ports

Detailed analysis on the current status of technical, legal and regulatory framework – at Member States level and at EU level – concerning the implementation of OPS in EU ports and recommendations focused on how to implement a workable and coordinated framework boosting the development of OPS in ports of the TEN-T Network.

A2

Maritime fleet adaptation

Study of the maritime electrification standards across the ports of the consortium and the vessels operating in these ports, providing operational recommendations - taking IMO guidelines as a reference - for a harmonised technical, legal and regulatory framework on maritime fleet adaptation for electrification.

A3

Technical studies for the electrification infrastructure of the participating TEN-T maritime ports

Technical design studies for the electrification infrastructure necessary for the ports of the consortium: this includes the development of front-end engineering design (FEED) studies and other necessary technical studies that will feed into the tender specifications of the future equipment and infrastructure.

A4

Environmental studies

Environmental studies, the scope of which will depend on the needs of each port. They will take into account the provisions stated in the Strategic Environmental Assessment (SEA) Directive (2001/42/EC) and the Environmental Impact Assessment (EIA) Directive (2014/52/EU), contributing, if necessary, to obtain the permits on the projected works for the future OPS infrastructure in the ports of the consortium.

A5

Clean power supply plans and tender documents

Clean energy supply plans (preparation or update) of the consortium's ports, based on the baseline identified for each port, in order to ensure the integration of OPS in the internal strategies of the Port Authorities; preparation of the tender documents for all proposed investments.

A6

Cost-benefit analysis and Financial blending schemes

Cost-benefit analysis (CBA) for each OPS project of the maritime ports involved in the EALING Action and suitable investment schemes design, which will allow the ports to proceed to the Financial Investment Decisions.

Consortium



PROJECT COORDINATOR
ROCÍO GARCÍA MOLINA
rgarcia@fundacion.valenciaport.com

COMMUNICATION AND DISSEMINATION MANAGER
VALERIA BURLANDO
burlando@circletouch.eu



Co-financed by the Connecting Europe
Facility of the European Union

www.ealingproject.eu

